

[ISUZU]

MODEL	CHASSIS CODE	YEAR	ACCESSORY	PRODUCT NO.	NOTE
ASKA	JJ	1983-Jun.1990		301	
	BC	Jul.1990-Aug.1993		107	Note3
			ACC	108	
	CD/CJ	Sep.1993-Aug.1995		213	
			ACC	214	
			SRS	217	
		Sep.1995-		219	
			ACC	220	
SRS			217		
117 COUPE	PA90	1978-1981		301	
GEMINI	JT	1985-Feb.1990		301	
		Mar.1990-Sep.1993		301	
	MA1-7	Sep.1993-Oct.1996	SRS	211	
	MJ	Nov.1996-	SRS	221	
FARGO FILLY	WFR	1981-Jul.1993		305	Note2
	WFS	Aug.1993-Jul.1995		301	Note2
	E24	Aug.1995-		620	Note4
			ACC	612	
			SRS	623	
	E50	Jul.1997-	SRS	623	
PIAZZA	JA130	1981-1989		302	
		1989-Jul.1991		301	
	JT221	Aug.1991-Oct.1993		301	
VEHICROSS	UGS25	Apr.1997-	SRS	317	
BIGHORN	UBS25/69	1981-Sep.1991		304	Note2
		Oct.1991-Jun.1993		301	Note2
		Jul.1993-		316	Note1
			SRS	317	Note1
	UBS26/73	Feb.1998-	SRS	317	Note1
BELLETT	TR90	1970-1974		N/A	
MU WIZARD	UCS17/55	May.1989-Nov.1995		301	Note2
	UCS69	Dec.1995-May.1998		316	
			SRS	317	Note1
UES25/73	Jun.1998-	SRS	317	Note1	
RODEO FASTER	TFS55	Nov.1989-1993		301	Note2

Note: Regardless of the make and model of the vehicle, there are cases that compatible product number is different among the same model with the same year, because of the variation of the factory parts. Before installing this product, please compare the back of your steering wheel and the configuration of the boss kit, and see if they fit. Also, for the air bag indicator, some of the vehicles cannot be lighted off, or even if it could, it may light on later.

[ISUZU]

Regardless of the make and model of the vehicle, there are cases that compatible product number is different among the same model with the same year, because of the variation of the factory parts. Before installing this product, please compare the back of your steering wheel and the configuration of the boss kit, and see if they fit. Also, for the air bag indicator, some of the vehicles cannot be lighted off, or even if it could, it may light on later.

•We strongly recommend requesting the installation to professionals.

Note* The compatibility is for the vehicle made before April 2009. Please inquiry us for vehicles made after April 2009.

Note1 The optional Boss Spacer is necessary. Please select one from 10, 15, 20 or 25mm.

Note2 The compatible boss kit may be different due to the differences of the vehicle. Please confirm the configuration of the factory steering wheel winker canceller. (Figure 3-1)

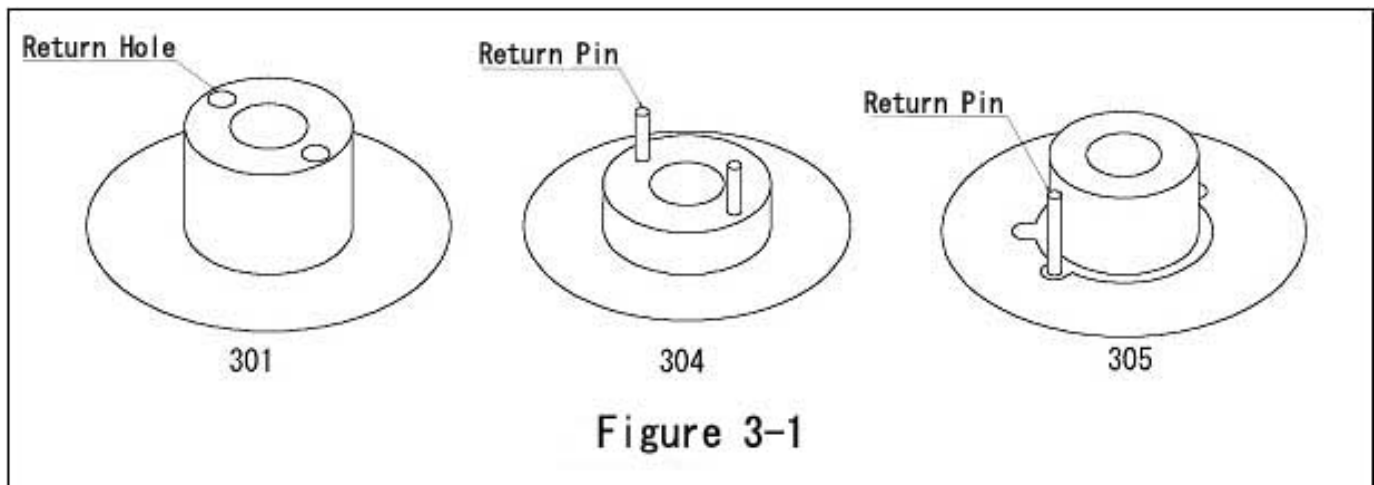
Note3 If the horn contact pivot on the car side over-hits the contact plate on the boss kit side, please stop the installation. (Figure1-1)

Note4 Boss Kit. #602 will be used for some vehicles. Please confirm the configuration of the winkle cancel on the factory steering wheel.

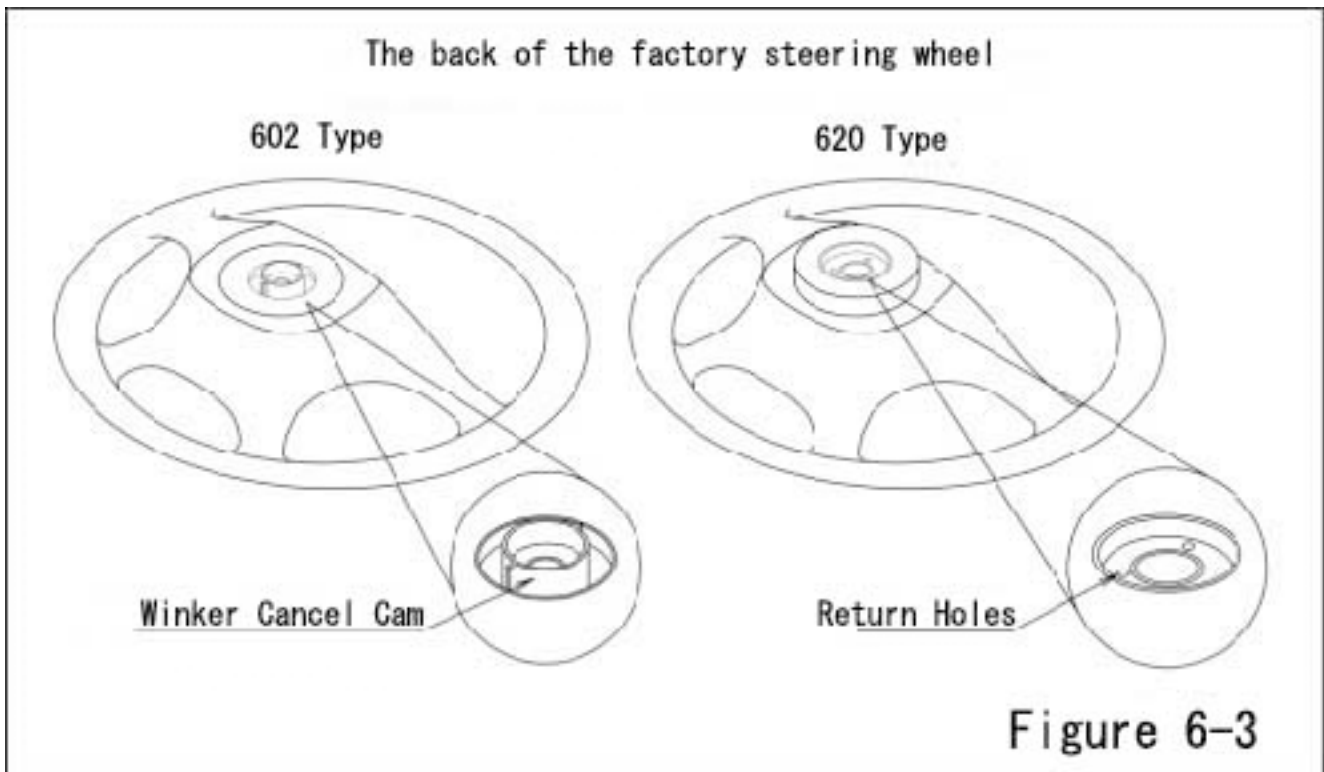
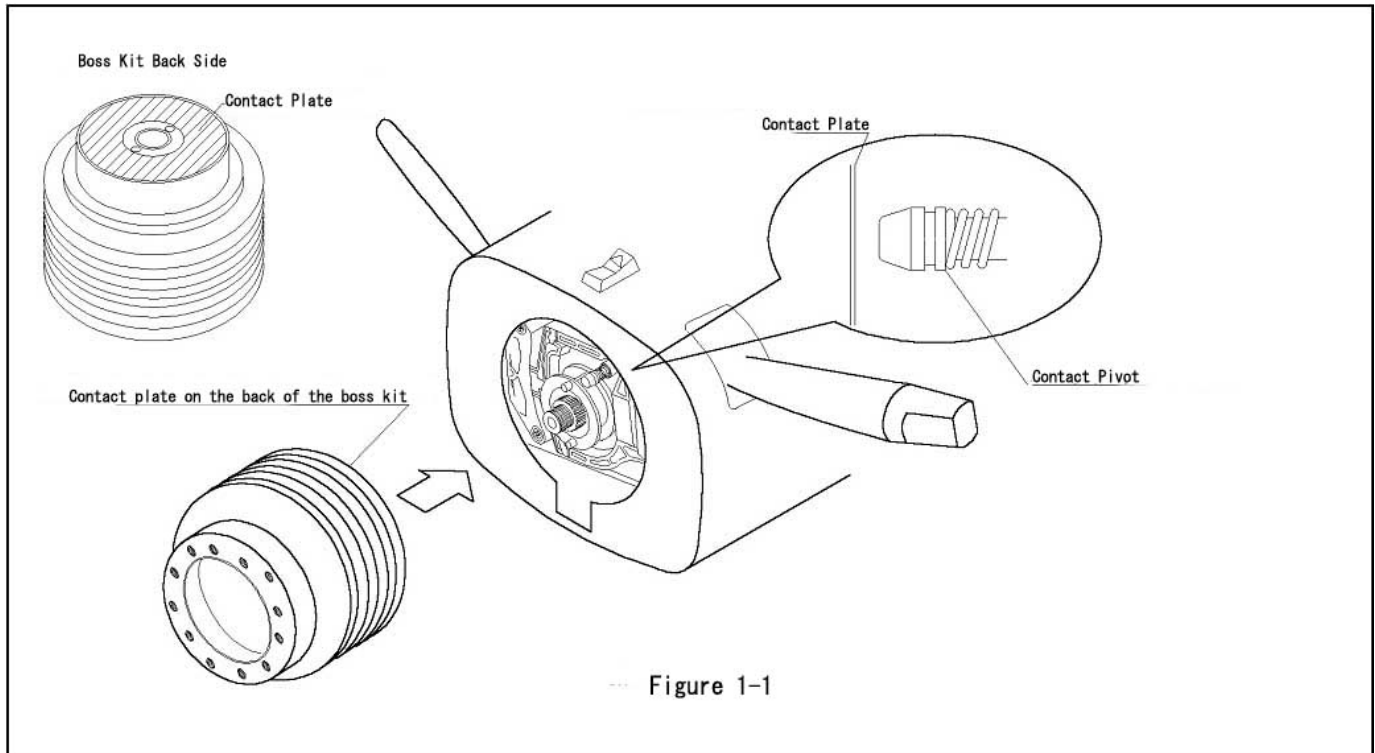
[Return pin on the steering side= #602 Return pin on the car side= #620 (Figure 6-3)]

Equipment Explanation

ACC	Automatic Cruise Control
SRS	Air bag



Note: Regardless of the make and model of the vehicle, there are cases that compatible product number is different among the same model with the same year, because of the variation of the factory parts. Before installing this product, please compare the back of your steering wheel and the configuration of the boss kit, and see if they fit. Also, for the air bag indicator, some of the vehicles cannot be lighted off, or even if it could, it may light on later.



Note: Regardless of the make and model of the vehicle, there are cases that compatible product number is different among the same model with the same year, because of the variation of the factory parts. Before installing this product, please compare the back of your steering wheel and the configuration of the boss kit, and see if they fit. Also, for the air bag indicator, some of the vehicles cannot be lighted off, or even if it could, it may light on later.